

# GASPARDO

# BALENA



## AIR DRILL

*Hoe drill*

# BALENA





## Contents

▪ Benefits and applications	4
▪ Tines - seed delivery and soil tillage	6
▪ Hoe drill tines	8
▪ Machine wheels	10
▪ Seed and fert cart	12
▪ Cart wheels	14
▪ Commitment and experience	16
▪ Covering harrow	18
▪ Roller	20
▪ Seed delivery control	22

## Productivity



Working speed up to 9 mph



Average fuel consumption  
3.2 gal/ac

## BALENA applications:



Tillage



Tillage + Seeding



Tillage + Fertilizer



Tillage + Seeding + Fertilizer

# BALENA

## BENEFITS AND APPLICATIONS

**BALENA** is a versatile air drill designed to match requirements of the biggest farms. Thanks to its large working width 40 ft and the high capacity cart (370 bu) this drill has a superlative operation capability. The special tines allow even cultivate the ground, burying the seed and the fertilizer. The single pass operation is guaranteed to minimize operation cost, saving time and fuel. The GPS driving control system enhances working performance preventing overlapping and waste of seed and fertilizer. A variable rate distribution allows procedures to get the best from your fields.





When required the machine can be use for soil tillage operation only (using just the front tines section) or for tillage and fertilizer delivery before the spring precision planting of row crops.



## TINES - SEED DELIVERY AND SOIL TILLAGE



### **Cross System**

Every shank is bolted on the frame and has a dual spring safety system that prevents damage while working in heavy and rocky conditions. Wearing tips are easy to replace thanks to the snap-fit system.

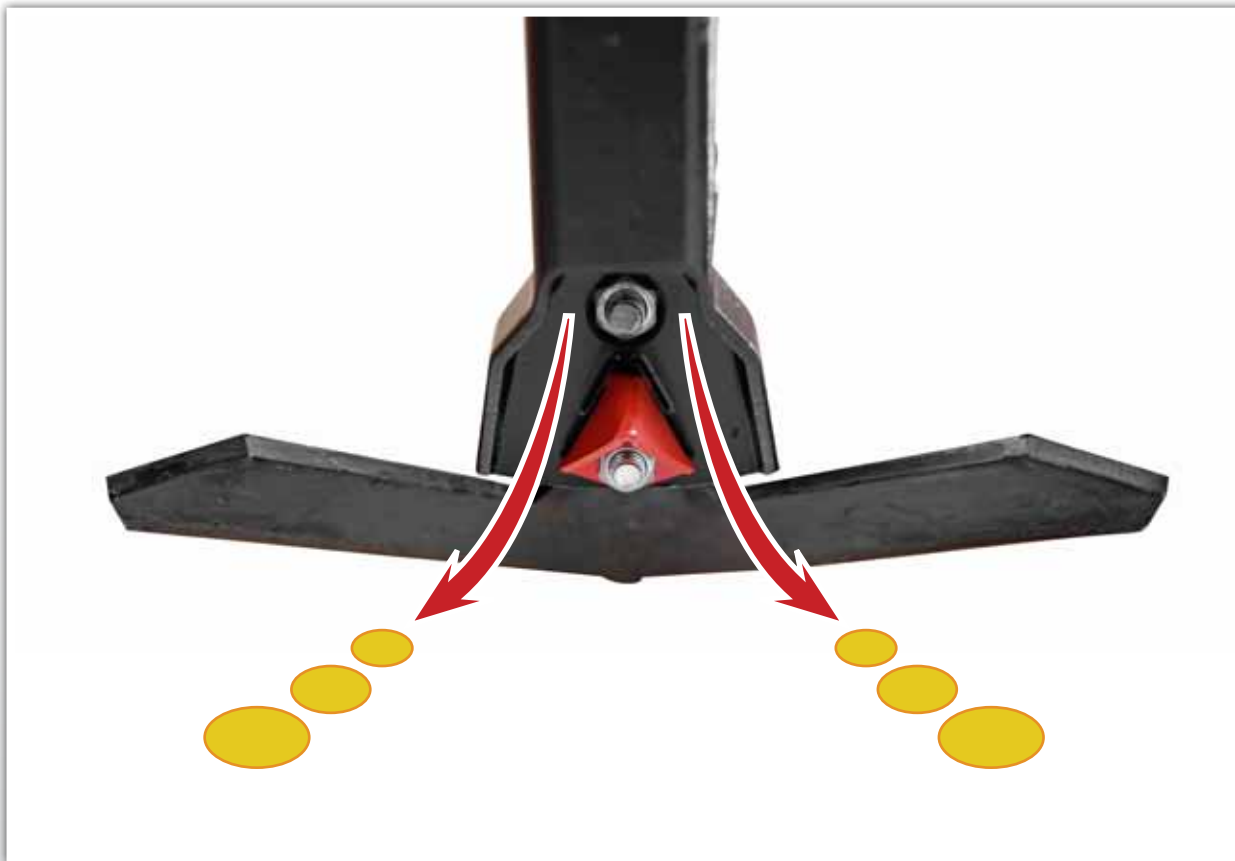
The tip design with delta profile guarantees a good soil cultivation even in rough condition including working on residues and weeds. The curved shank design improves residue incorporation.

The five well spaced ranks and the high ground clearance guarantee great flow, preventing clogging and stops. The machine can work at high speed in the worst conditions.





## HOE DRILL TINES TWIN ROW SEED DELIVERY



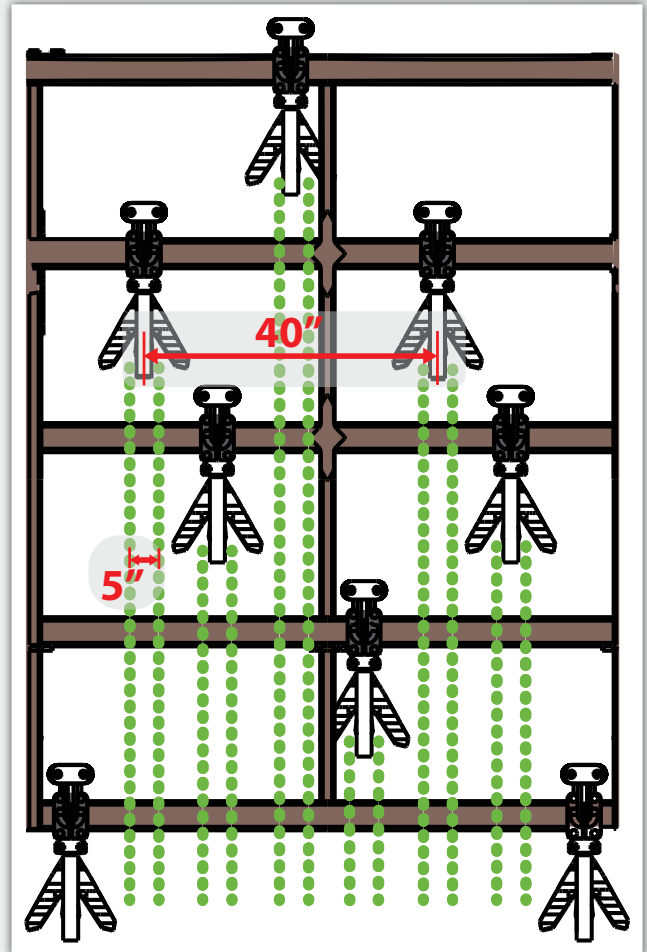
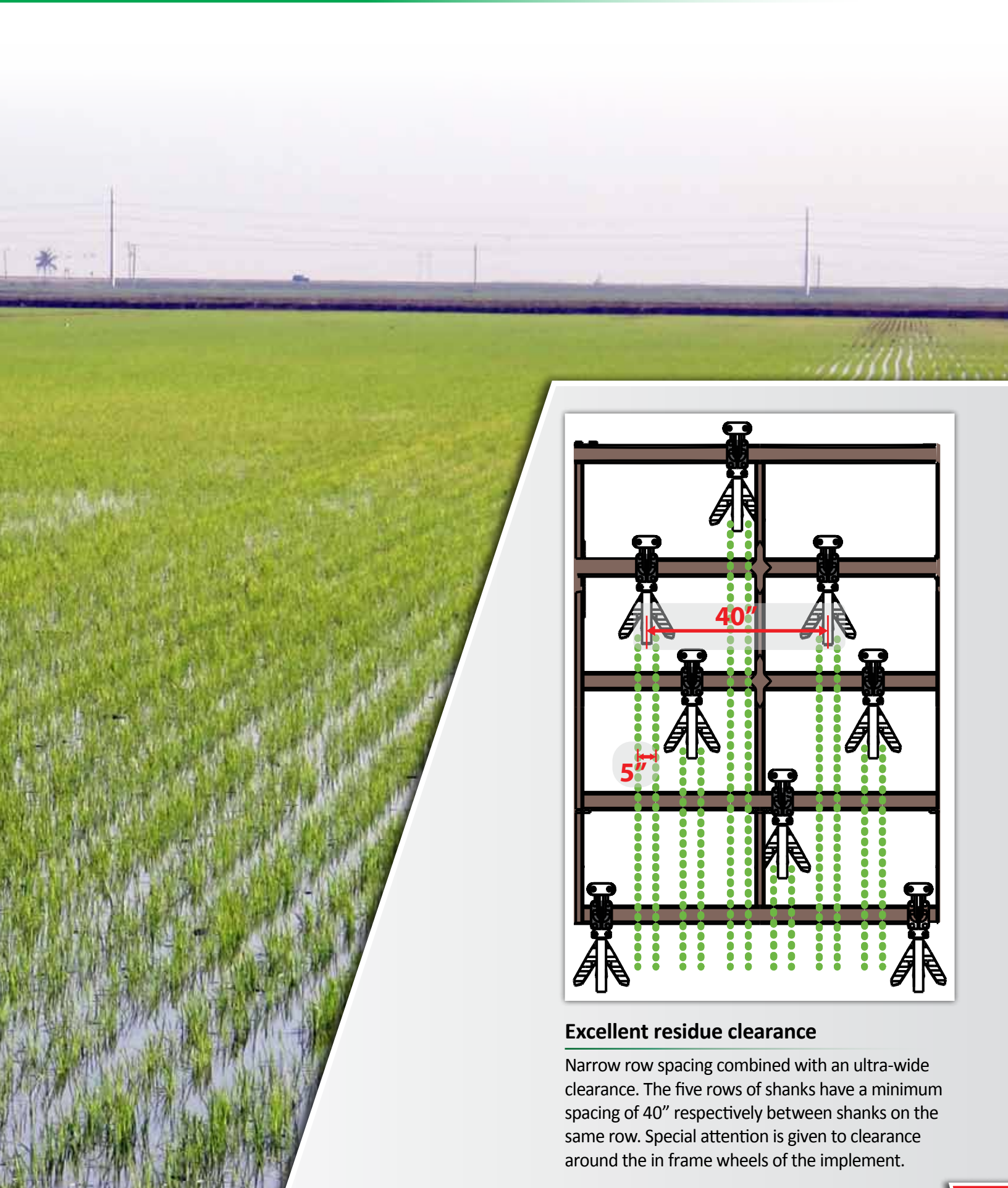
### **Twin row delivery**

The 48 units deliver seed in two lines each, the final result is even row spacing of 5" (12,50 cm). This solution allow a drastic reduction in the number of tines in action, this means:

- Fewer of wearing components
- Wider clearance among seeding units
- No clogging problem
- Perfect seed population







## Excellent residue clearance

Narrow row spacing combined with an ultra-wide clearance. The five rows of shanks have a minimum spacing of 40" respectively between shanks on the same row. Special attention is given to clearance around the in frame wheels of the implement.

# BALENA

## MACHINE WHEELS

During operation the machine stay on the wheels. Thanks to this it is possible to adjust the seeding depth. The front wheel rank has a parallel arm connection and pivot hinge.

It is made of Heavy Duty cast steel, for long lasting performance. During transportation, back wheels and front wheels are both on the ground to spread the weight over a wide surface and guarantee a good maneuverability.

The rear roller has tandem wheels for better stability on all road conditions. Depth setting is simple with the screw-control system and single-point adjustment.





## Heavy duty frame

Shanks are mounted on a very Heavy Duty square tube frame, made of high tensile still.



# BALENA

## SEED AND FERT CART

The great hopper capacity 370 bu allow working in most conditions more than 75 acres (delivering seed and fertilizer) without refilling stops, it means time and operation cost savings.





## Seed and fertilizer handling

The three large top windows makes refilling operations quick and easy. Using hopper carts with augers the operation takes a few minutes.



# BALENA

## CART WHEELS

The low ground pressure doesn't affect seed emergence

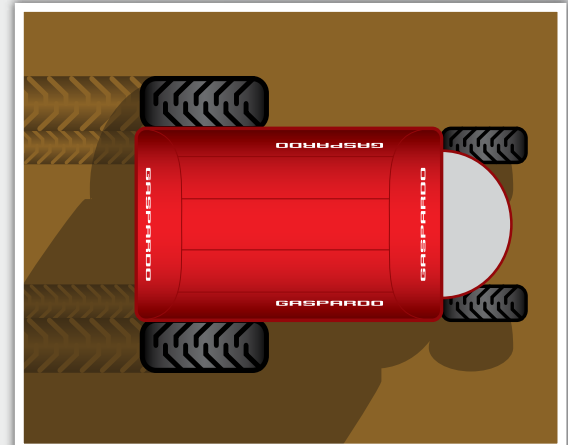
Thanks to large size, low pressure and special design of the tread, the cart tires do not leave deep track marks on wet conditions.

The soil-tread contact is made progressively on a big surface to drastically reduce any seed damage.

Tyre (tire) size:

- 500/45-22.5 Front
- 710/45-26.5 Rear





Even weight distribution on the four extra large tire wheels.

# BALENA

## COMMITMENT AND EXPERIENCE







“This distribution system has been designed to be accurate and versatile. The transmission system made with PTO shafts instead of chains has no maintenance requirements and is extremely reliable. A shear bolt prevents any damage to the distributors if a problem occur. The GASPARDO distributor system is accurate with every seed and rate.”

Mario Moglioni, R&D department - Balena designer



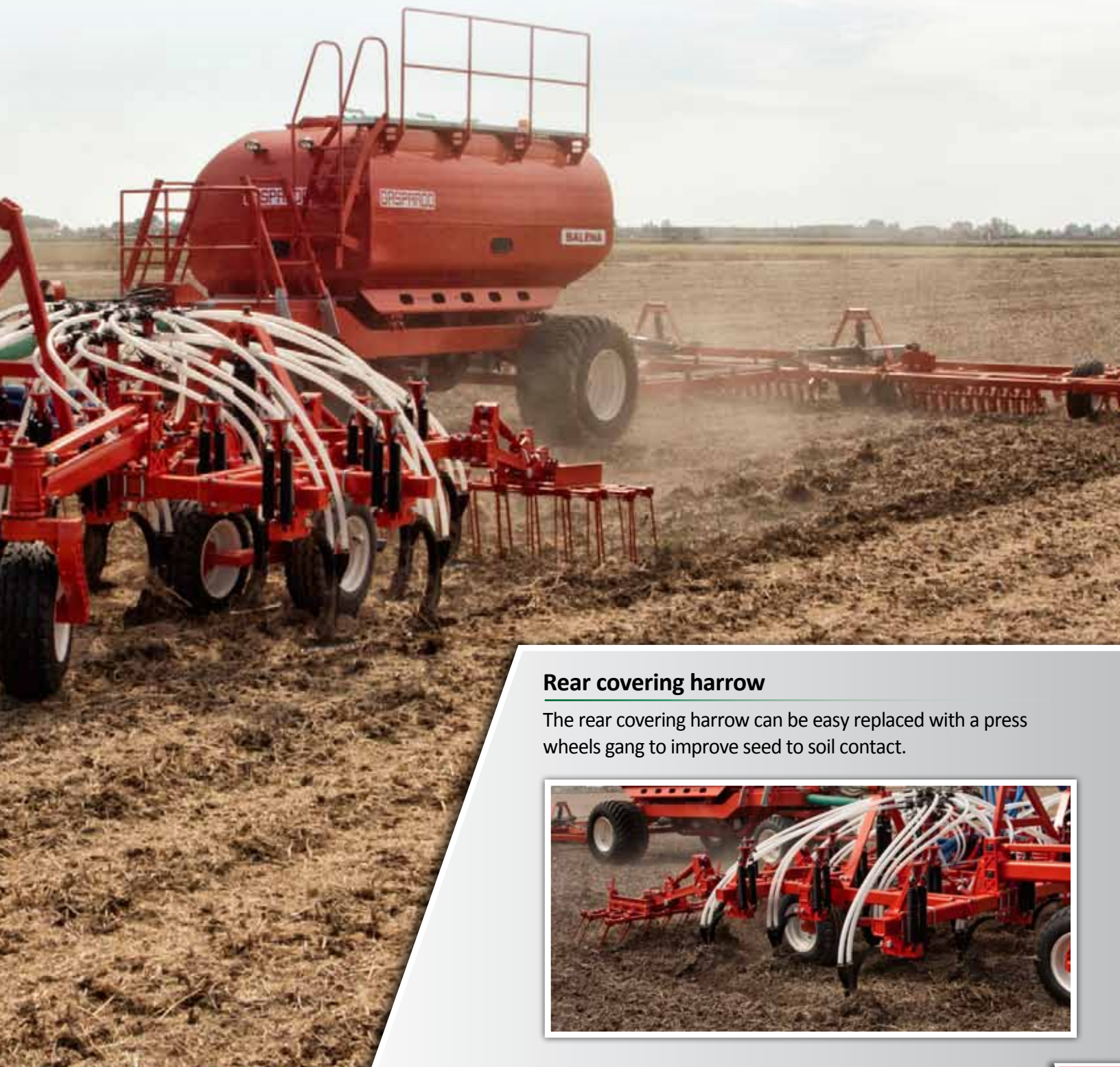
# BALENA

## COVERING HARROW

The rear covering harrow can be adjusted to match field and residue conditions. It is made of five independent sections, each made of four rows of spring harrows. Angle and down pressure can be quick and easy adjusted.

Maintenance is extremely easy thanks to the snap fit and single locking pin to fit it on the back of the drill.





## Rear covering harrow

The rear covering harrow can be easily replaced with a press wheels gang to improve seed to soil contact.



# BALENA

## ROLLER

The rear spiral roller performs two jobs:

- Ground levelling - seed covering
- Soil reconsolidation

The spiral design guarantees a very effective soil levelling, the heavy design guarantees an even soil reconsolidation that drastically reduces air in the ground.

Its action is extremely consistent on the total working width thanks to the 9 independent floating sections.





## **Rear spiral roller**

The rear spiral roller can be added or removed in a few minutes. For transportation it folds up in three sections.



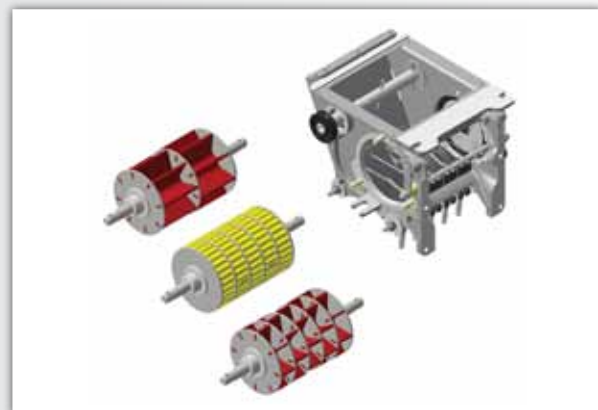
## SEED DELIVERY CONTROL



### GPS electronic system

Machine can be delivered with a full electronic/GPS control system powered by FMX Timble.

The electronic control get a full seeding management from the cab, tractor driving, sections control and variable rate delivery.



### GASPARDO

The GASPARDO metering unit system with interchangeable rollers to keep a consistent revolution speed while delivering different products.

The volumetric seed and fertilizer delivery guarantees a better accuracy compared with classic auger metering systems.



**Electronic or Mechanical  
ACCURACY IS GUARANTEED**



## **Manual gearbox & easy monitor**

The manual gearbox system is extremely reliable and easy to use. Our 3 cam transmission design guarantee higher accuracy at all rates compared to conventional 2 cam systems. Calibration is very time saving using our one handle lever to set the rate. All of our cams and bearings on the gearbox run in an oil bath to be maintenance free.

**BALENA** can be delivered with easy monitor that controls most of machine functions from the tractor cabin.



# GASPARDO

#### MASCHIO GASPARDO S.p.A.

Headquarters  
Via Marcello, 73  
35011 Campodarsego - Padova - Italy  
Tel. +39 049 9289810 - Fax +39 049 9289900

e-mail: [info@maschio.it](mailto:info@maschio.it)  
<http://www.maschionet.com>

#### MASCHIO-GASPARDO North America, Inc.

112 3rd Ave East  
DeWitt, IA 52742 - USA  
Phone: +1 (563) 659-6400  
Fax: +1 (563) 659-6404  
[info@maschio.us](mailto:info@maschio.us)  
[www.maschio.us](http://www.maschio.us)

Production plant  
Via Mussons, 7  
I - 33075 Morsano al Tagliamento (PN) Italy  
Tel. +39 0434 695410 - Fax +39 0434 695425

**COMPANY WITH QUALITY MANAGEMENT  
SYSTEM CERTIFIED BY DNV  
= ISO 9001:2008 =**

Dealer: